



**I'M IN** *for the moments that matter*

**IMFINZI + chemotherapy: a first-line treatment for adults with extensive-stage small cell lung cancer (ES-SCLC)**

## **I'M IN WITH IMFINZI + CHEMOTHERAPY**

### **WHAT IS IMFINZI?**

IMFINZI is a prescription medicine used to treat adults with **a type of lung cancer called small cell lung cancer (SCLC)**. IMFINZI may be used **with the chemotherapy medicines etoposide and carboplatin or cisplatin as your first treatment when your SCLC** has spread within your lungs or to other parts of the body (extensive-stage small cell lung cancer, or ES-SCLC).



Injection for Intravenous Use 50 mg/mL

It is not known if IMFINZI is safe and effective in children.

### **SELECT SAFETY INFORMATION**

#### **What is the most important information I should know about IMFINZI?**

IMFINZI is a medicine that may treat certain cancers by working with your immune system. IMFINZI can cause your immune system to attack normal organs and tissues in any area of your body and can affect the way they work. These problems can sometimes become severe or life-threatening and can lead to death. You can have more than one of these problems at the same time. These problems may happen anytime during treatment or even after your treatment has ended.

Click [here](#) to see additional Important Safety Information.





# GETTING STARTED WITH IMFINZI

Being diagnosed with extensive-stage small cell lung cancer (ES-SCLC) can come as a shock. This can make finding the information you need feel overwhelming. Use this guide to learn more about ES-SCLC and how treatment with IMFINZI may help so you can feel informed and ready to plan your next steps.

## TABLE OF CONTENTS

What is small cell lung cancer?	4
What is IMFINZI?	6
How do IMFINZI + chemotherapy work together?	7
What are the clinical trial results?	12
How is IMFINZI given?	16
How do I prepare for my treatment?	18
Resources and support	20
Important Safety Information	22

### SELECT SAFETY INFORMATION (continued)

Call or see your healthcare provider right away if you develop any new or worsening signs or symptoms, including:

**Lung problems:** cough, shortness of breath, and chest pain

Click [here](#) to see additional Important Safety Information.



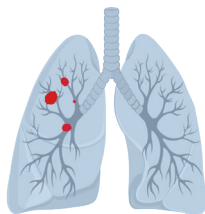
## WHAT IS SMALL CELL LUNG CANCER?

There are two main types of lung cancer: small cell lung cancer (SCLC) and non-small cell lung cancer (NSCLC).

### Facts about SCLC:

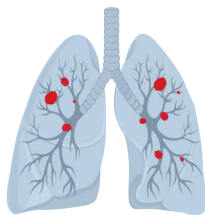
- Makes up 10%-15% of all lung cancers
- Grows and spreads more aggressively than NSCLC
- Usually begins in the major airways in the center of the chest that lead to the lungs
- Often has already spread at the time of diagnosis

### THERE ARE 2 STAGES OF SCLC



#### Limited-stage small cell lung cancer (LS-SCLC)

means that the cancer is located in one lung or is confined to one side of the chest.



#### Extensive-stage small cell lung cancer (ES-SCLC)

means that the cancer has spread from one lung to the other, to lymph nodes on the other side of the chest, or to other parts of the body.



Nearly  
**~70%**  
of people  
diagnosed  
with small cell  
lung cancer  
have ES-SCLC.



## WHAT IS IMFINZI?



**IMFINZI** is approved to be used as the initial treatment in combination with chemotherapy for adults with ES-SCLC.

6



**I'M IN** *for making memories*

IMFINZI may not work for everyone. It is not known if IMFINZI is safe and effective in children.

## HOW DO IMFINZI + CHEMOTHERAPY WORK TOGETHER?

### IMFINZI IS AN IMMUNOTHERAPY

This means that IMFINZI, a prescription medicine, works with the immune system to help the body fight cancer. IMFINZI may also attack healthy cells.

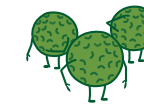
### MEET THE KEY PLAYERS:



HEALTHY CELL



UNHEALTHY CELL



IMMUNE SYSTEM



CANCER CELL



IMFINZI



CHEMOTHERAPY

### SELECT SAFETY INFORMATION (continued)

Call or see your healthcare provider right away if you develop any new or worsening signs or symptoms, including:

**Intestinal problems:** diarrhea (loose stools) or more frequent bowel movements than usual; stools that are black, tarry, sticky, or have blood or mucus; and severe stomach-area (abdomen) pain or tenderness

**Liver problems:** yellowing of your skin or the whites of your eyes, severe nausea or vomiting, pain on the right side of your stomach area (abdomen), dark urine (tea colored), and bleeding or bruising more easily than normal

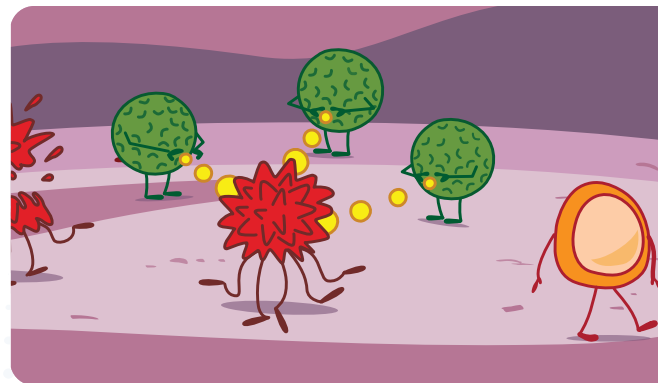
Click [here](#) to see additional Important Safety Information.

 **IMFINZI<sup>®</sup>**  
durvalumab  
Injection for Intravenous Use 50 mg/mL

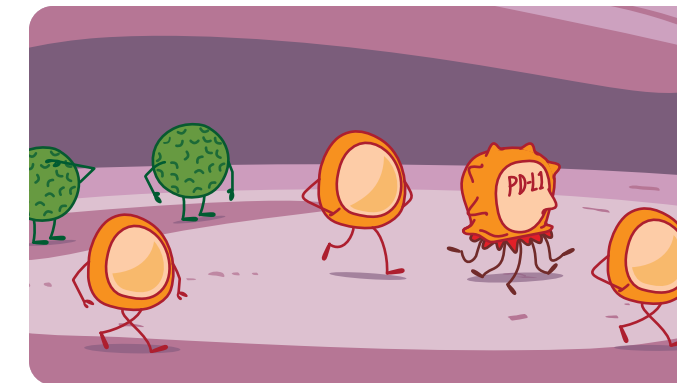
7



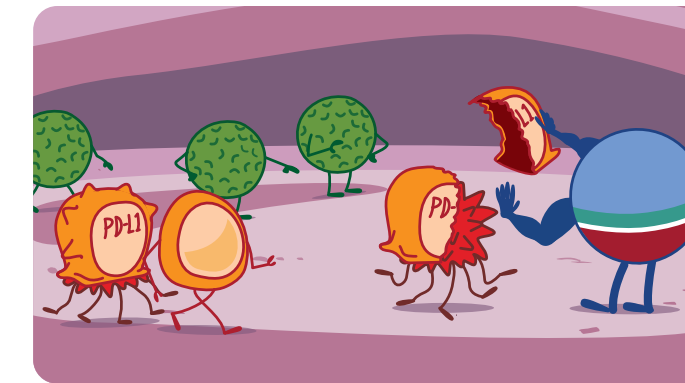
## HOW IMFINZI WORKS TO HELP FIGHT ES-SCLC



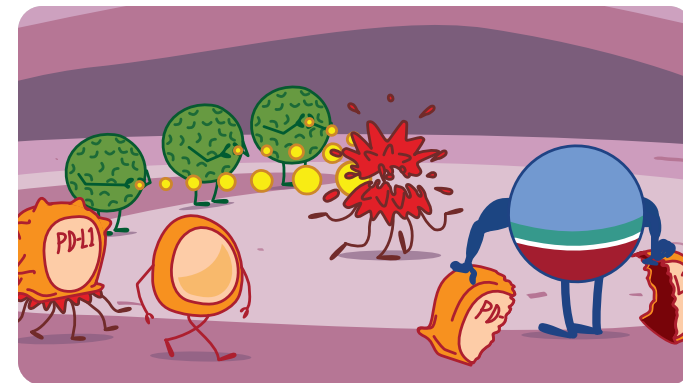
- 1 When cancer cells appear in your body, your immune system works to recognize and attack them.



- 2 PD-L1 is a protein that disguises cancer cells from the immune system.



- 3 IMFINZI works by binding to and blocking PD-L1 to remove the disguise...



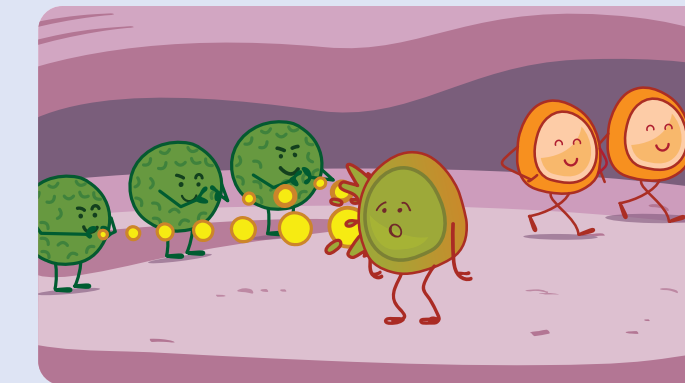
- 4 ...so your immune system is better able to find and attack these cancer cells. There is a chance that IMFINZI may affect healthy cells, too.

### SELECT SAFETY INFORMATION (continued)

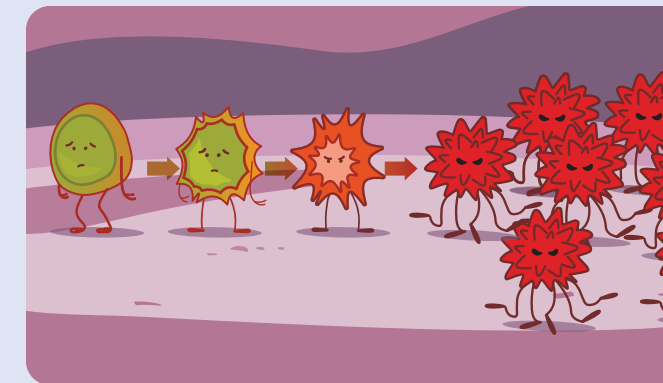
Call or see your healthcare provider right away if you develop any new or worsening signs or symptoms, including:

**Hormone gland problems:** headaches that will not go away or unusual headaches; eye sensitivity to light; eye problems; rapid heartbeat; increased sweating; extreme tiredness; weight gain or weight loss; feeling more hungry or thirsty than usual; urinating more often than usual; hair loss; feeling cold; constipation; your voice gets deeper; dizziness or fainting; and changes in mood or behavior, such as decreased sex drive, irritability, or forgetfulness

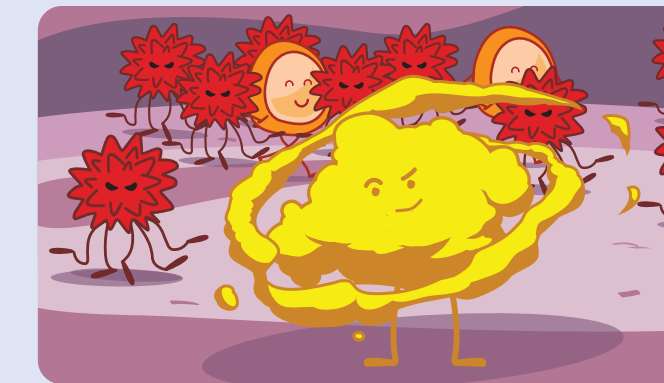
## HOW CHEMOTHERAPY WORKS TO HELP FIGHT ES-SCLC



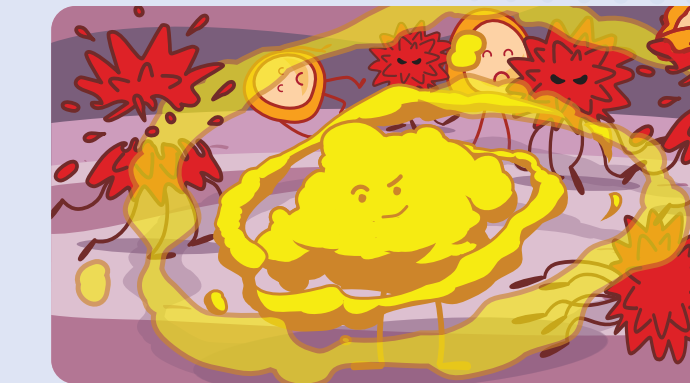
- 1 The immune system serves as your body's defense system against infections and diseases and can typically detect and destroy unhealthy cells.



- 2 Unhealthy cells, if not detected and destroyed by the immune system, may eventually turn into cancer.



- 3 Cancer cells grow abnormally and multiply quickly. This is where chemotherapy, a type of cancer treatment, can help.



- 4 Chemotherapy has the ability to destroy rapidly growing cells—such as cancer cells—throughout the body.  
Since chemotherapy can destroy fast-growing cells, healthy cells may also be affected.

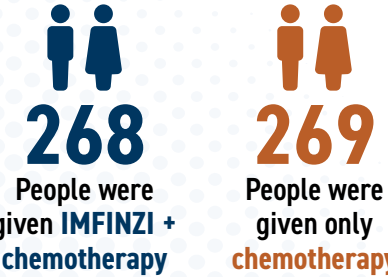
Click [here](#) to see additional Important Safety Information.



# WHAT ARE THE CLINICAL TRIAL RESULTS?

IMFINZI was studied in a clinical trial that included people diagnosed with ES-SCLC who had not yet undergone treatment.

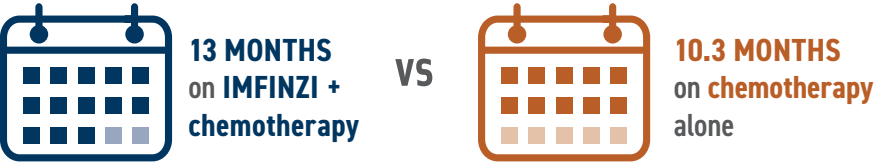
Everyone in the clinical trial received the standard treatment for ES-SCLC, which included a combination of 2 types of chemotherapy—etoposide and carboplatin or cisplatin.



## IMFINZI + CHEMOTHERAPY HELPED PEOPLE LIVE LONGER COMPARED TO CHEMOTHERAPY ALONE

The trial measured how long people with ES-SCLC lived while taking IMFINZI + chemotherapy (etoposide and carboplatin or cisplatin). In studies of treatments for cancer, this is called "overall survival." It is measured in months.

### Median Overall Survival\*



People taking IMFINZI + chemotherapy had a 27% lower risk of dying compared to those taking chemotherapy alone.

\*Median overall survival means the mid-point between people who lived the longest and those who lived for the shortest period of time.

## FOLLOW-UP ANALYSES

Over the course of 3 years, a follow-up analysis measured the number of people who were alive taking IMFINZI + chemotherapy and chemotherapy alone.

### At 1 Year†:

- **52.8%** on **IMFINZI + chemotherapy**
- **39.3%** on **chemotherapy alone**

### At 2 Years†:

- **22.9%** on **IMFINZI + chemotherapy**
- **13.9%** on **chemotherapy alone**



In a follow-up analysis at 3 years†, **17.6% of the people taking IMFINZI + chemotherapy were alive** and **5.8% on chemotherapy alone were alive.**

†From a post hoc analysis. Based on the limits of the analysis, results are descriptive and your experience may differ.

## SELECT SAFETY INFORMATION (continued)

**Call or see your healthcare provider right away if you develop any new or worsening signs or symptoms, including:**

**Kidney problems:** decrease in your amount of urine, blood in your urine, swelling of your ankles, and loss of appetite

**Skin problems:** rash; itching; skin blistering or peeling; painful sores or ulcers in mouth or nose, throat, or genital area; fever or flu-like symptoms; and swollen lymph nodes

**Pancreas problems:** pain in your upper stomach area (abdomen), severe nausea or vomiting, and loss of appetite

Click [here](#) to see additional Important Safety Information.

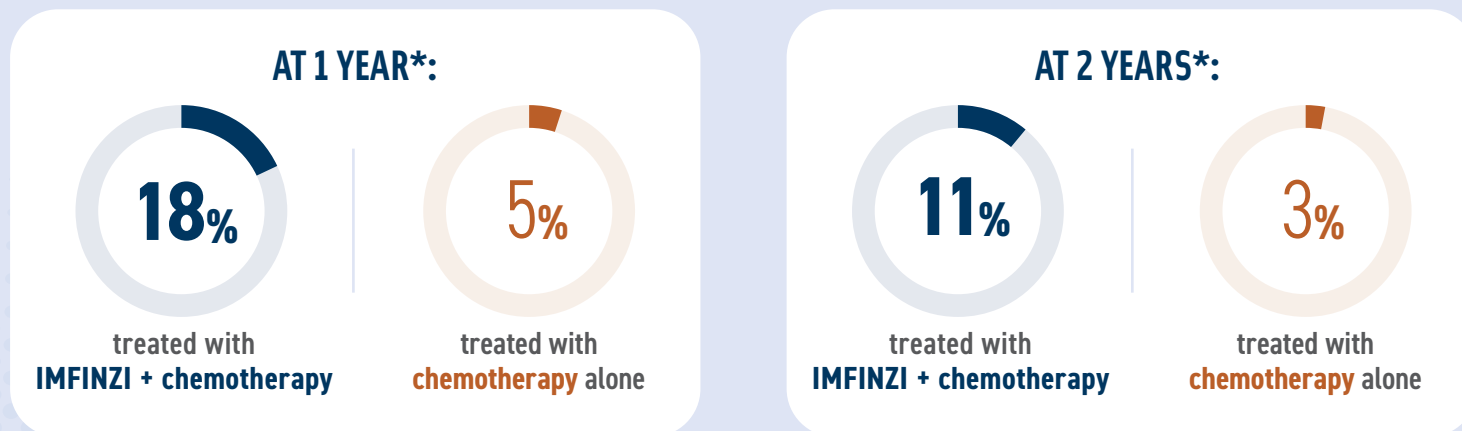




## WHAT ARE THE CLINICAL TRIAL RESULTS? (continued)

A follow-up analysis measured the amount of people who were alive without their tumors growing or spreading when they were taking IMFINZI + chemotherapy and those taking chemotherapy alone.

### PEOPLE WHO WERE ALIVE WITHOUT THEIR CANCER GROWING OR SPREADING



\*Based on the limits of the analysis, results are descriptive and your experience may differ.

In the clinical trial, half of the people lived without their tumors growing or spreading for **5.1 months** when treated with IMFINZI + chemotherapy and **5.4 months** when treated with chemotherapy alone.

### PEOPLE WHO SAW THEIR TUMORS SHRINK†



People treated with  
**IMFINZI + chemotherapy**

†Based on the limits of the analysis, results are descriptive and your experience may differ.



People treated with  
**chemotherapy alone**

### SELECT SAFETY INFORMATION (continued)

Problems can also happen in other organs and tissues. These are not all of the signs and symptoms of immune system problems that can happen with IMFINZI. Call or see your healthcare provider right away for any new or worsening signs or symptoms, which may include: Chest pain, irregular heartbeats, shortness of breath or swelling of ankles; confusion, sleepiness, memory problems, changes in mood or behavior, stiff neck, balance problems, tingling, numbness or weakness of the arms or legs; double vision, blurry vision, sensitivity to light, eye pain, changes in eye sight; persistent or severe muscle pain or weakness, muscle cramps, joint pain, joint stiffness or swelling; and low red blood cells and bruising

Click [here](#) to see additional Important Safety Information.

## HOW IS IMFINZI GIVEN?

### PHASE 1: INITIAL TREATMENT

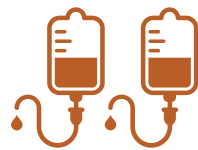
This is the first step in your IMFINZI treatment journey. This will last for **3 months**. IMFINZI is given in combination with chemotherapy medications. The most common chemotherapy medications are etoposide, with either carboplatin or cisplatin. Your doctor will work with you to find which chemotherapy option is right for you and will also test your blood for certain side effects.

IMFINZI

CHEMOTHERAPY



+



every 3 weeks for



### PHASE 2: MAINTENANCE

During the second phase of treatment, you'll receive **IMFINZI by itself once a month** for as long as your doctor recommends. Your doctor will monitor you for side effects and progression.

IMFINZI



1 time



**I'M IN** *for the next adventure*

#### SELECT SAFETY INFORMATION (continued)

Infusion reactions that can sometimes be severe or life-threatening. Signs and symptoms of infusion reactions may include: chills or shaking, itching or rash, flushing, shortness of breath or wheezing, dizziness, feel like passing out, fever, and back or neck pain

Click [here](#) to see additional Important Safety Information.

**IMFINZI**<sup>®</sup>  
durvalumab  
Injection for Intravenous Use 50 mg/mL



## HOW DO I PREPARE FOR MY TREATMENT?

The more prepared you are, the better your experience will be. Here are a few suggestions to help get you ready for treatment day:

### BEFORE TREATMENT, MAKE SURE TO:



- Drink plenty of water and eat a small meal
- Dress comfortably and in loose-fitting clothing
- Write down questions you may have

### DURING TREATMENT, BRING YOUR:



- Identification/insurance card
- List of medications you are currently taking
- Activities to keep you occupied, such as reading materials, puzzles, and mobile devices
- Water bottle & snacks in case you get hungry
- Lip balm, lotion, and hard candy to help soothe dry skin and lips
- A sweater or blanket, as it can get cold in the treatment center

### AFTER TREATMENT:



- Be sure to schedule your next appointment before leaving the treatment center
- If possible, take it easy for the rest of the day

### SELECT SAFETY INFORMATION (continued)

**Complications, including graft-versus-host disease (GVHD), in people who have received a bone marrow (stem cell) transplant that uses donor stem cells (allogeneic).** These complications can be serious and can lead to death. These complications may happen if you underwent transplantation either before or after being treated with IMFINZI. Your healthcare provider will monitor you for these complications

Click [here](#) to see additional Important Safety Information.



### START THE CONVERSATION WITH YOUR DOCTOR

Click [here](#) to download the IMFINZI Conversation Guide—a resource with helpful questions for you to ask your doctor about ES-SCLC and treatment with IMFINZI.

**IMFINZI®**  
durvalumab  
Injection for Intravenous Use 50 mg/mL

## RESOURCES AND SUPPORT



Every person living with lung cancer has their own unique challenges and needs for different kinds of support. The resources listed on this page are great places to find:

- Practical information about lung cancer
- Helpful tips for treatment
- Emotional support resources



**American Lung Association** is dedicated to improving lung health and preventing lung disease through education, advocacy, and research.



**Go2 Foundation for Lung Cancer** provides life-changing patient information, support services, and resources to all those affected by lung cancer, free of charge.



**Lung Cancer Research Foundation** works to improve lung cancer outcomes by funding research for the prevention, diagnosis, treatment, and cure of lung cancer.



**LUNgevity Foundation** offers a community of empowerment, support, and hope, with services and information on local events in your area.



**LVNG With Lung Cancer** is a community of more than 2,60,000 people around the globe who continue to inspire, support, educate, and connect with one another after being diagnosed with lung cancer.

## TIPS FOR GOOD COMMUNICATION WITH YOUR CAREGIVER

Whether they're your close friends or family members, caregivers can play an important role when it comes to your health. They can provide you with support and help you throughout your treatment. But as they are supporting you, there are also some simple things you can do to help them in the process.



**Talk it out.** Communicating with your caregiver is essential. The more you talk, the more understanding and knowledgeable your caregiver will be.



**Bring a friend.** Be open to asking and receiving help from others. It can help take some weight off you and your caregiver's shoulders.



**Join a support group.** Try to find groups run by professional facilitators who can provide appropriate guidance for people living with ES-SCLC. You are not alone in this and talking with others can help.



**Make each other's day.** Plan fun, easygoing activities with one another, no matter how big or small they may be. It's a nice way to take the focus off of treatment and reduce stress for you and your caregiver.

## ASTRAZENECA WANTS YOU TO HAVE THE BEST SUPPORT OPTIONS AVAILABLE



The AstraZeneca Access 360™ program can help you get started with IMFINZI.

For more information, call **1-844-ASK-A360 (1-844-275-2360)**, Monday-Friday from 8 AM to 6 PM ET, or visit **[MyAccess360.com](https://www.myaaccess360.com)**.









# IMPORTANT SAFETY INFORMATION

## WHAT IS THE MOST IMPORTANT INFORMATION I SHOULD KNOW ABOUT IMFINZI?

IMFINZI is a medicine that may treat certain cancers by working with your immune system. IMFINZI can cause your immune system to attack normal organs and tissues in any area of your body and can affect the way they work. These problems can sometimes become severe or life-threatening and can lead to death. You can have more than one of these problems at the same time. These problems may happen anytime during treatment or even after your treatment has ended.

Call or see your healthcare provider right away if you develop any new or worsening signs or symptoms, including:

-  **Lung problems:** cough, shortness of breath, and chest pain
-  **Intestinal problems:** diarrhea (loose stools) or more frequent bowel movements than usual; stools that are black, tarry, sticky, or have blood or mucus; and severe stomach-area (abdomen) pain or tenderness
-  **Liver problems:** yellowing of your skin or the whites of your eyes, severe nausea or vomiting, pain on the right side of your stomach area (abdomen), dark urine (tea colored), and bleeding or bruising more easily than normal
-  **Hormone gland problems:** headaches that will not go away or unusual headaches; eye sensitivity to light; eye problems; rapid heartbeat; increased sweating; extreme tiredness; weight gain or weight loss; feeling more hungry or thirsty than usual; urinating more often than usual; hair loss; feeling cold; constipation; your voice gets deeper; dizziness or fainting; and changes in mood or behavior, such as decreased sex drive, irritability, or forgetfulness



**Kidney problems:** decrease in your amount of urine, blood in your urine, swelling of your ankles, and loss of appetite



**Skin problems:** rash; itching; skin blistering or peeling; painful sores or ulcers in mouth or nose, throat, or genital area; fever or flu-like symptoms; and swollen lymph nodes



**Pancreas problems:** pain in your upper stomach area (abdomen), severe nausea or vomiting, and loss of appetite

**Problems can also happen in other organs and tissues. These are not all of the signs and symptoms of immune system problems that can happen with IMFINZI. Call or see your healthcare provider right away for any new or worsening signs or symptoms, which may include:** Chest pain, irregular heartbeats, shortness of breath or swelling of ankles; confusion, sleepiness, memory problems, changes in mood or behavior; stiff neck, balance problems, tingling, numbness or weakness of the arms or legs; double vision, blurry vision, sensitivity to light, eye pain, changes in eye sight; persistent or severe muscle pain or weakness, muscle cramps, joint pain, joint stiffness or swelling; and low red blood cells and bruising



**Infusion reactions that can sometimes be severe or life-threatening.** Signs and symptoms of infusion reactions may include: chills or shaking, itching or rash, flushing, shortness of breath or wheezing, dizziness, feel like passing out, fever, and back or neck pain



**Complications, including graft-versus-host disease (GVHD), in people who have received a bone marrow (stem cell) transplant that uses donor stem cells (allogeneic).** These complications can be serious and can lead to death. These complications may happen if you underwent transplantation either before or after being treated with IMFINZI. Your healthcare provider will monitor you for these complications

Click [here](#) to see additional Important Safety Information.

# IMPORTANT SAFETY INFORMATION (continued)

**Getting medical treatment right away may help keep these problems from becoming more serious.** Your healthcare provider will check you for these problems during your treatment with IMFINZI. Your healthcare provider may treat you with corticosteroid or hormone replacement medicines. Your healthcare provider may also need to delay or completely stop treatment with IMFINZI if you have severe side effects.

**Before you receive IMFINZI, tell your healthcare provider about all of your medical conditions, including if you:**

- have immune system problems such as Crohn's disease, ulcerative colitis, or lupus
- have received an organ transplant
- have received or plan to receive a stem cell transplant that uses donor stem cells (allogeneic)
- have received radiation treatment to your chest area
- have a condition that affects your nervous system, such as myasthenia gravis or Guillain-Barré syndrome
- are pregnant or plan to become pregnant. IMFINZI can harm your unborn baby

**Females who are able to become pregnant:**

- Your healthcare provider will give you a pregnancy test before you start treatment with IMFINZI.
- You should use an effective method of birth control during your treatment and for 3 months after the last dose of IMFINZI. Talk to your healthcare provider about birth control methods that you can use during this time.
- Tell your healthcare provider right away if you become pregnant or think you may be pregnant during treatment with IMFINZI.
- are breastfeeding or plan to breastfeed. It is not known if IMFINZI passes into your breast milk. Do not breastfeed during treatment and for 3 months after the last dose of IMFINZI.

24 **Tell your healthcare provider about all the medicines you take**, including prescription and over-the-counter medicines, vitamins, and herbal supplements.

## WHAT ARE THE POSSIBLE SIDE EFFECTS OF IMFINZI?

**IMFINZI can cause serious side effects (see above):**

**The most common side effects of IMFINZI when used with other anticancer medicines in people with ES-SCLC** include nausea, hair loss, and feeling tired or weak.

Tell your healthcare provider if you have any side effect that bothers you or that does not go away. These are not all the possible side effects of IMFINZI. Ask your healthcare provider or pharmacist for more information.

*Call your doctor for medical advice about side effects. You may [report side effects related to AstraZeneca products](#).  
If you prefer to report these to the FDA, either visit [www.FDA.gov/medwatch](http://www.FDA.gov/medwatch) or call 1-800-FDA-1088.*

## WHAT IS IMFINZI?

IMFINZI is a prescription medicine used to treat adults with **a type of lung cancer called small cell lung cancer (SCLC)**. IMFINZI may be used **with the chemotherapy medicines etoposide and carboplatin or cisplatin as your first treatment when your SCLC** has spread within your lungs or to other parts of the body (extensive-stage small cell lung cancer, or ES-SCLC).

It is not known if IMFINZI is safe and effective in children.

**Please see Full Prescribing Information including Medication Guide for IMFINZI.**







IMFINZI may not work for everyone. It is not known if IMFINZI is safe and effective in children.

**I'M IN** *for what matters most*

**I'M IN TO ASK MY DOCTOR ABOUT IMFINZI**

**LEARN MORE AT [IMFINZI.COM](https://www.imfinzi.com)**

Or call the AstraZeneca Information Center at **1-800-236-9933**

Monday-Friday, 8 AM - 6 PM ET, excluding holidays



IMFINZI is a registered trademark and AstraZeneca Access 360 is a trademark of the AstraZeneca group of companies.

©2024 AstraZeneca. All rights reserved. US-84454 Last Updated 1/24