



I'M IN

for making today count

UNRESECTABLE

HEPATOCELLULAR
CARCINOMA

IMFINZI combined with one dose of IMJUDO* is an immunotherapy treatment approved for adults with unresectable hepatocellular carcinoma (uHCC).

*IMFINZI with one dose of IMJUDO, followed by infusions of IMFINZI alone every 4 weeks.

WHAT ARE IMFINZI AND IMJUDO?

IMFINZI is a prescription medicine used in combination with IMJUDO to treat adults with **a type of liver cancer that cannot be removed by surgery (unresectable hepatocellular carcinoma or uHCC).**

It is not known if IMFINZI and IMJUDO are safe and effective in children.

 **IMFINZI®**
durvalumab
Injection for Intravenous Use 50 mg/mL

 **IMJUDO®**
tremelimumab-actl
Injection for Intravenous Use 20 mg/mL

SELECT SAFETY INFORMATION

What is the most important information I should know about IMFINZI and IMJUDO?

IMFINZI and IMJUDO are medicines that may treat certain cancers by working with your immune system. IMFINZI and IMJUDO can cause your immune system to attack normal organs and tissues in any area of your body and can affect the way they work. These problems can sometimes become severe or life-threatening and can lead to death. You can have more than one of these problems at the same time. These problems may happen anytime during treatment or even after your treatment has ended.

For additional Important Safety Information, please see pages 16-19.



STARTING WITH IMFINZI + IMJUDO

A liver cancer diagnosis can feel sudden and difficult to process. You may be experiencing a range of emotions and feel unsure about what comes next. This guide is here for you. Use it to learn more about your cancer, treatment with IMFINZI + IMJUDO, and available support as you take the next step in your journey.

TABLE OF CONTENTS

Learn about unresectable hepatocellular carcinoma	4
What are IMFINZI + IMJUDO?	6
How were IMFINZI + IMJUDO studied?	7
What were the clinical trial results for IMFINZI + IMJUDO?	8
How do IMFINZI + IMJUDO work together?	10
How are IMFINZI + IMJUDO given?	12
How do I prepare for treatment?	13
Resources and support	14
Important Safety Information	16

SELECT SAFETY INFORMATION (continued)

Call or see your healthcare provider right away if you develop any new or worsening signs or symptoms, including:

Lung problems: cough, shortness of breath, and chest pain

For additional Important Safety Information, please see pages 16-19.



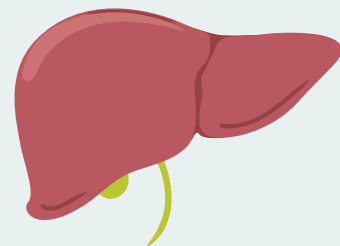
LEARN ABOUT UNRESECTABLE HEPATOCELLULAR CARCINOMA

Hepatocellular carcinoma (HCC) is a type of liver cancer. Because symptoms often don't appear until the advanced stages, many people don't get diagnosed with HCC until the cancer has spread beyond the liver—which can come as a shock. It's only natural to be overwhelmed, but it's important to know you are not alone in this.



An estimated 41,000 people in the US were diagnosed with liver cancer in 2022

There is more than one type of liver cancer, but 75% to 80% of these cancers are HCC, making it the most common type of liver cancer in adults. And over half of all people with HCC are diagnosed in an advanced stage.



HCC AFFECTS HOW YOUR LIVER WORKS

Your liver does a lot of important jobs. A healthy liver:

- breaks down nutrients that your body needs
- helps your body get rid of toxins
- supports healthy blood flow

HCC can prevent the liver from doing these vital functions. Eventually, HCC can cause liver failure.

WHAT ARE RISK FACTORS FOR HCC?

HCC is more common in men than in women. Some other major known risk factors for HCC include:



- viral hepatitis B infection
- viral hepatitis C infection
- Type 2 diabetes (T2D)
- heavy alcohol use
- non-alcoholic fatty liver disease (NAFLD)
- obesity
- tobacco use



What is an unresectable tumor?

An unresectable tumor cannot be removed with surgery. This is because the tumor is too large or is too close to a large blood vessel, or because the cancer has spread to other parts of the body.



No matter how your condition started, there are reasons to be hopeful, as doctors study new ways to understand and treat HCC.

WHAT ARE IMFINZI + IMJUDO?

IMFINZI + IMJUDO IS A COMBINATION IMMUNOTHERAPY

IMFINZI and IMJUDO together are a cancer treatment that works with your body's immune system to help fight your cancer. The combination of these two immunotherapies, IMFINZI + IMJUDO, is a treatment regimen for adults with uHCC. This treatment may also cause the immune system to attack healthy cells.



For additional Important Safety Information, please see pages 16-19.

HOW WERE IMFINZI + IMJUDO STUDIED?

A clinical trial included 2 groups of people with uHCC whose cancer wasn't previously treated.



393 people
received IMFINZI + IMJUDO



389 people
received standard treatment
for uHCC (sorafenib)

The main goal of the study was to compare IMFINZI + IMJUDO vs sorafenib, as measured by overall survival. The 2 groups may have included people where their disease was limited to a certain part of the body, but progressed following treatment. See the next page for the study results.

SELECT SAFETY INFORMATION (continued)

Call or see your healthcare provider right away if you develop any new or worsening signs or symptoms, including:

Intestinal problems: diarrhea (loose stools) or more frequent bowel movements than usual; stools that are black, tarry, sticky, or have blood or mucus; and severe stomach-area (abdomen) pain or tenderness

Liver problems: yellowing of your skin or the whites of your eyes, severe nausea or vomiting, pain on the right side of your stomach area (abdomen), dark urine (tea colored), and bleeding or bruising more easily than normal



WHAT WERE THE CLINICAL TRIAL RESULTS FOR IMFINZI + IMJUDO?

For people with uHCC:

IMFINZI + IMJUDO HELPED PEOPLE LIVE LONGER COMPARED TO THOSE WHO RECEIVED STANDARD TREATMENT

Lower risk of death



IMFINZI + IMJUDO lowered the risk of death by 22% compared with sorafenib.

Median Overall Survival*



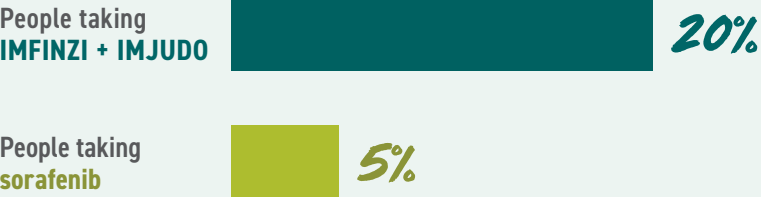
*The study compared median overall survival, which is the length of time from the start of treatment to the time that half of the patients are living. Half of the people receiving IMFINZI and IMJUDO were living at 16 months, compared to 14 months for people treated with sorafenib.

In a follow-up analysis at 4 years[†]:

[†]Based on the limits of the analysis, results are descriptive only, and your experience may differ.



20% OF PEOPLE ON IMFINZI + IMJUDO SAW THEIR TUMORS SHRINK[‡]



[‡]The study included 393 people taking IMFINZI + IMJUDO and 389 people taking sorafenib. 79 people taking IMFINZI + IMJUDO and 20 people taking sorafenib saw their tumors shrink.

Based on the limits of the analysis, results are descriptive only, and your experience may differ.

SELECT SAFETY INFORMATION (continued)

Call or see your healthcare provider right away if you develop any new or worsening signs or symptoms, including:

Hormone gland problems: headaches that will not go away or unusual headaches; eye sensitivity to light; eye problems; rapid heartbeat; increased sweating; extreme tiredness; weight gain or weight loss; feeling more hungry or thirsty than usual; urinating more often than usual; hair loss; feeling cold; constipation; your voice gets deeper; dizziness or fainting; and changes in mood or behavior, such as decreased sex drive, irritability, or forgetfulness

For additional Important Safety Information, please see pages 16-19.

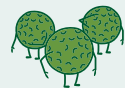


HOW DO IMFINZI + IMJUDO WORK TOGETHER?

MEET THE KEY PLAYERS



HEALTHY CELL



IMMUNE SYSTEM



CANCER CELL



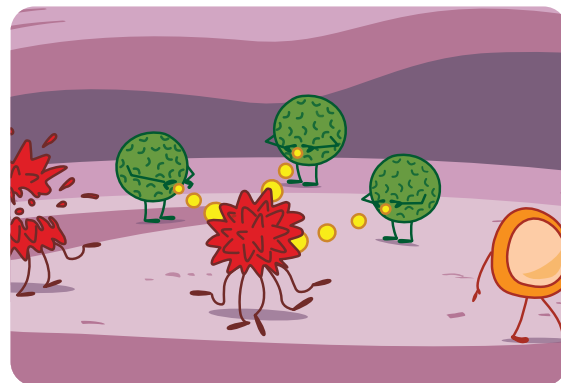
IMFINZI



IMJUDO

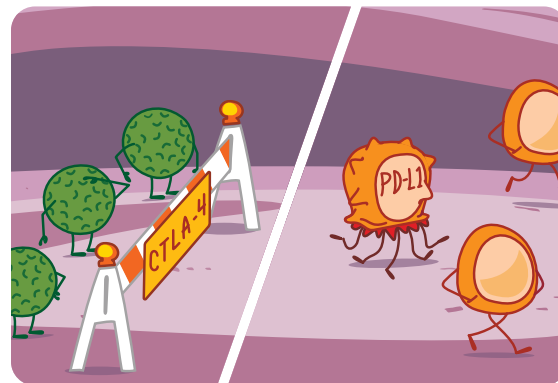
HOW IMMUNOTHERAPIES IMFINZI + IMJUDO WORK TO HELP FIGHT uHCC

IMFINZI + IMJUDO are immunotherapies that work with your body's immune system to help treat cancer. They may also affect healthy cells.



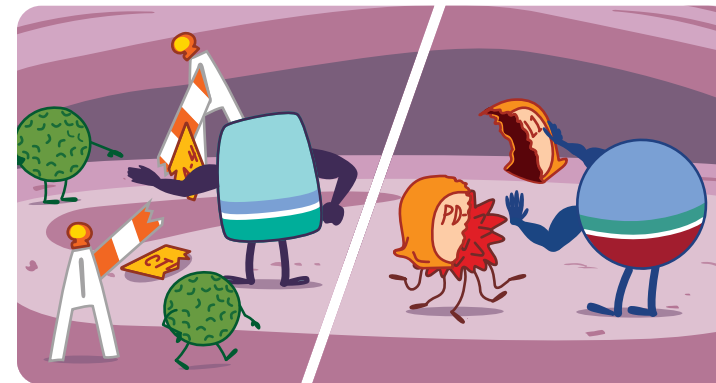
1

The immune system serves as your body's natural defense against infections and diseases. It knows how to find and attack cancer cells when they appear in your body.



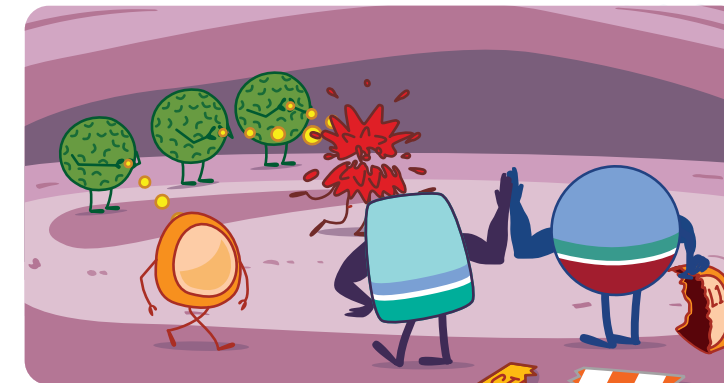
2

Cancer cells use the proteins CTLA-4 and PD-L1 to help them escape your immune system. CTLA-4 keeps your immune cells from attacking, while PD-L1 disguises the cancer cells from your immune system.



3

IMFINZI helps reveal the cancer cells hidden by PD-L1, and IMJUDO helps your immune cells go back on the attack.



4

So your immune system can do what it's meant to—fight cancer cells. IMFINZI + IMJUDO may also affect healthy cells.

SELECT SAFETY INFORMATION (continued)

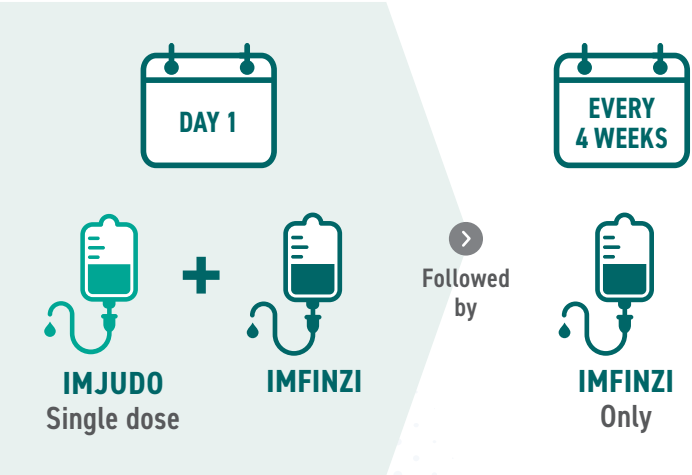
Call or see your healthcare provider right away if you develop any new or worsening signs or symptoms, including:

Kidney problems: decrease in your amount of urine, blood in your urine, swelling of your ankles, and loss of appetite

HOW ARE IMFINZI + IMJUDO GIVEN?

IMFINZI AND IMJUDO ARE INTRAVENOUS (IV) INFUSIONS

You'll be given IMFINZI and IMJUDO at your doctor's office or an infusion center. For your first infusion, you'll receive IMFINZI with just one dose of IMJUDO, followed by infusions of IMFINZI alone every 4 weeks.



HOW LONG ARE INFUSIONS?

IMFINZI and IMJUDO infusions usually last **about an hour**, followed by a 60-minute observation period after IMJUDO. Your doctor will also test your blood to monitor for certain side effects.



HOW MANY INFUSIONS WILL I RECEIVE?

The number of treatments will be determined by your doctor. They will monitor you regularly for possible side effects, and to see if IMFINZI is working to keep your cancer from growing or spreading. You will stop receiving IMFINZI if side effects become intolerable.



Tell your healthcare provider if you develop side effects or have any infusion reactions. For a list of side effects, see Important Safety Information on pages 16-19.

HOW DO I PREPARE FOR TREATMENT?



During treatment, your comfort should be a priority. A little planning can go a long way to help improve your treatment experience. Here are a few suggestions to help get you ready for infusion days:



Drink plenty of water and stay hydrated



Remember to bring your insurance card



Dress comfortably in loose-fitting clothes



Have a list of medications you are currently taking



Write down any questions you may have for your care team



Stay occupied during treatment with reading materials, puzzles, and mobile devices

For additional Important Safety Information, please see pages 16-19.



RESOURCES AND SUPPORT

Living with hepatocellular carcinoma comes with challenges.

But there are many places where you can find support to help you on your journey. The following resources can provide:

- Additional information about your cancer
- More helpful tips for living with cancer
- Emotional support by connecting you with other patients

SUPPORT FOR PEOPLE WITH LIVER CANCER



Blue Faery, The Adrienne Wilson Liver Cancer Association

Blue Faery's mission is to prevent, treat, and cure primary liver cancer, especially hepatocellular carcinoma, through research, education, and advocacy. With a variety of tools and resources, Blue Faery aims to improve the quality of life for people with HCC and caregivers. Visit **BlueFaery.org**.

TRANSPORTATION ASSISTANCE



Air Charity Network

Provides free air transportation to medical facilities for patients who are financially distressed or unable to travel on public transportation. Visit **aircharitynetwork.org**.

American Cancer Society Road To Recovery®

Coordinates rides with an American Cancer Society volunteer driver or with a local transportation partner to provide transportation to and from treatment for patients. Visit **cancer.org/support-programs-and-services/road-to-recovery**.

HELPING YOU ACCESS THE CARE YOU NEED



The **AstraZeneca Access 360™** program can help you get started with IMFINZI.

For more information, call **1-844-ASK-A360 (1-844-275-2360)**, Monday-Friday from 8 AM-6 PM ET, or visit **MyAccess360.com**.

The **IMFINZI Patient Savings Program** is available to assist with out-of-pocket costs for IMFINZI for eligible commercially insured people. For more information, please visit **astrazenecaspecialtysavings.com**.








IMPORTANT SAFETY INFORMATION

WHAT IS THE MOST IMPORTANT INFORMATION I SHOULD KNOW ABOUT IMFINZI AND IMJUDO?

IMFINZI and IMJUDO are medicines that may treat certain cancers by working with your immune system. IMFINZI and IMJUDO can cause your immune system to attack normal organs and tissues in any area of your body and can affect the way they work. These problems can sometimes become severe or life-threatening and can lead to death. You can have more than one of these problems at the same time. These problems may happen anytime during treatment or even after your treatment has ended.

Call or see your healthcare provider right away if you develop any new or worsening signs or symptoms, including:

-  **Lung problems:** cough, shortness of breath, and chest pain
-  **Intestinal problems:** diarrhea (loose stools) or more frequent bowel movements than usual; stools that are black, tarry, sticky, or have blood or mucus; and severe stomach-area (abdomen) pain or tenderness
-  **Liver problems:** yellowing of your skin or the whites of your eyes, severe nausea or vomiting, pain on the right side of your stomach area (abdomen), dark urine (tea colored), and bleeding or bruising more easily than normal
-  **Hormone gland problems:** headaches that will not go away or unusual headaches; eye sensitivity to light; eye problems; rapid heartbeat; increased sweating; extreme tiredness; weight gain or weight loss; feeling more hungry or thirsty than usual; urinating more often than usual; hair loss; feeling cold; constipation; your voice gets deeper; dizziness or fainting; and changes in mood or behavior, such as decreased sex drive, irritability, or forgetfulness
-  **Kidney problems:** decrease in your amount of urine, blood in your urine, swelling of your ankles, and loss of appetite



Skin problems: rash; itching; skin blistering or peeling; painful sores or ulcers in mouth or nose, throat, or genital area; fever or flu-like symptoms; and swollen lymph nodes



Pancreas problems: pain in your upper stomach area (abdomen), severe nausea or vomiting, and loss of appetite



Problems can also happen in other organs and tissues. These are not all of the signs and symptoms of immune system problems that can happen with IMFINZI and IMJUDO. Call or see your healthcare provider right away for any new or worsening signs or symptoms, which may include: Chest pain, irregular heartbeats, shortness of breath or swelling of ankles; confusion, sleepiness, memory problems, changes in mood or behavior, stiff neck, balance problems, tingling, numbness or weakness of the arms or legs; double vision, blurry vision, sensitivity to light, eye pain, changes in eye sight; persistent or severe muscle pain or weakness, muscle cramps, joint pain, joint stiffness or swelling; and low red blood cells and bruising



Infusion reactions that can sometimes be severe or life-threatening. Signs and symptoms of infusion reactions may include: chills or shaking, itching or rash, flushing, shortness of breath or wheezing, dizziness, feel like passing out, fever, and back or neck pain



Complications, including graft-versus-host disease (GVHD), in people who have received a bone marrow (stem cell) transplant that uses donor stem cells (allogeneic). These complications can be serious and can lead to death. These complications may happen if you underwent transplantation either before or after being treated with IMFINZI. Your healthcare provider will monitor you for these complications

For additional Important Safety Information, please see pages 18-19.



IMPORTANT SAFETY INFORMATION (continued)

Getting medical treatment right away may help keep these problems from becoming more serious. Your healthcare provider will check you for these problems during your treatment with IMFINZI and IMJUDO. Your healthcare provider may treat you with corticosteroid or hormone replacement medicines. Your healthcare provider may also need to delay or completely stop treatment with IMFINZI and IMJUDO if you have severe side effects

Before you receive IMFINZI and IMJUDO, tell your healthcare provider about all of your medical conditions, including if you:

- have immune system problems such as Crohn's disease, ulcerative colitis, or lupus
- have received an organ transplant
- have received or plan to receive a stem cell transplant that uses donor stem cells (allogeneic)
- have received radiation treatment to your chest area
- have a condition that affects your nervous system, such as myasthenia gravis or Guillain-Barré syndrome
- are pregnant or plan to become pregnant. IMFINZI and IMJUDO can harm your unborn baby

Females who are able to become pregnant:

- Your healthcare provider will give you a pregnancy test before you start treatment with IMFINZI and IMJUDO.
- You should use an effective method of birth control during your treatment and for 3 months after the last dose of IMFINZI and IMJUDO. Talk to your healthcare provider about birth control methods that you can use during this time.
- Tell your healthcare provider right away if you become pregnant or think you may be pregnant during treatment with IMFINZI and IMJUDO.
- are breastfeeding or plan to breastfeed. It is not known if IMFINZI and IMJUDO pass into your breast milk. Do not breastfeed during treatment and for 3 months after the last dose of IMFINZI and IMJUDO.

Tell your healthcare provider about all the medicines you take, including prescription and over-the-counter medicines, vitamins, and herbal supplements.

WHAT ARE THE POSSIBLE SIDE EFFECTS OF IMFINZI AND IMJUDO?

IMFINZI and IMJUDO can cause serious side effects (see pages 16-17):

The most common side effects of IMFINZI and IMJUDO in people with uHCC include rash, diarrhea, feeling tired, itchiness, muscle or bone pain, and stomach (abdominal) pain.

Tell your healthcare provider if you have any side effect that bothers you or that does not go away. These are not all the possible side effects of IMFINZI and IMJUDO. Ask your healthcare provider or pharmacist for more information.

Call your doctor for medical advice about side effects. You may [report side effects related to AstraZeneca products](#). [If you prefer to report these to the FDA, either visit \[www.FDA.gov/medwatch\]\(http://www.FDA.gov/medwatch\) or call 1-800-FDA-1088.](#)

WHAT ARE IMFINZI AND IMJUDO?

IMFINZI is a prescription medicine used in combination with IMJUDO to treat adults with **a type of liver cancer that cannot be removed by surgery (unresectable hepatocellular carcinoma or uHCC).**

It is not known if IMFINZI and IMJUDO are safe and effective in children.

Please see additional Important Safety Information throughout and click here for Full Prescribing Information including Medication Guide for [IMFINZI](#) and [IMJUDO](#).





I'M IN -

to stay in the fight

VISIT [IMFINZI.COM/uHCC](https://imfinzi.com/uHCC) TO LEARN MORE

Or call AstraZeneca at **1-800-236-9933**

Monday-Friday, 8 AM-6 PM ET, excluding holidays



IMFINZI and IMJUDO are registered trademarks and AstraZeneca Access 360 is a trademark of the AstraZeneca group of companies.
©2024 AstraZeneca. All rights reserved. US-84432 Last Updated 1/24

